

P2W - ePermit to Work Software for the Oil & Gas sector... at an affordable price!



P2W from GEMsoft7 is an electronic Permit to Work (ePTW), Isolations, Access Control and Contractor Management system that fully supports HSG250, HSG253, and the Step Change Task Risk Assessment process.

P2W is priced very competitively and requires minimal consultancy to implement, making it an attractive alternative to the more expensive ePTW products available.



NEWS IN BRIEF

ORGANISATIONS FREED FROM INFLEXIBLE PERMIT TO WORK SYSTEMS!

GEMsoft7 has freed many organisations from the clutches of inflexible and expensive software. Perenco moved to **P2W** in a matter of weeks, with no issues, and have never looked back!

P2W IS OUT THERE NOW!

P2W is already being used by NuStar Terminals, Perenco and the Wood Group. GEMsoft7 is now actively seeking other companies who want to protect their staff and contractors more effectively. GEMsoft7's MD, Phil McKell, has asked that any engineering or health and safety managers contact him immediately if they have any PTW requirements that they would like to discuss.

COMPANIES CUSTOMISE THEIR OWN ePTW IN RECORD TIME!

P2W includes onscreen editors to support tailoring of Permits, Risk Assessments, Isolations and reports so that customers can customise their system to match their own processes. Alternatively GEMsoft7 can provide a fast kick start with its rapid deployment consultancy.

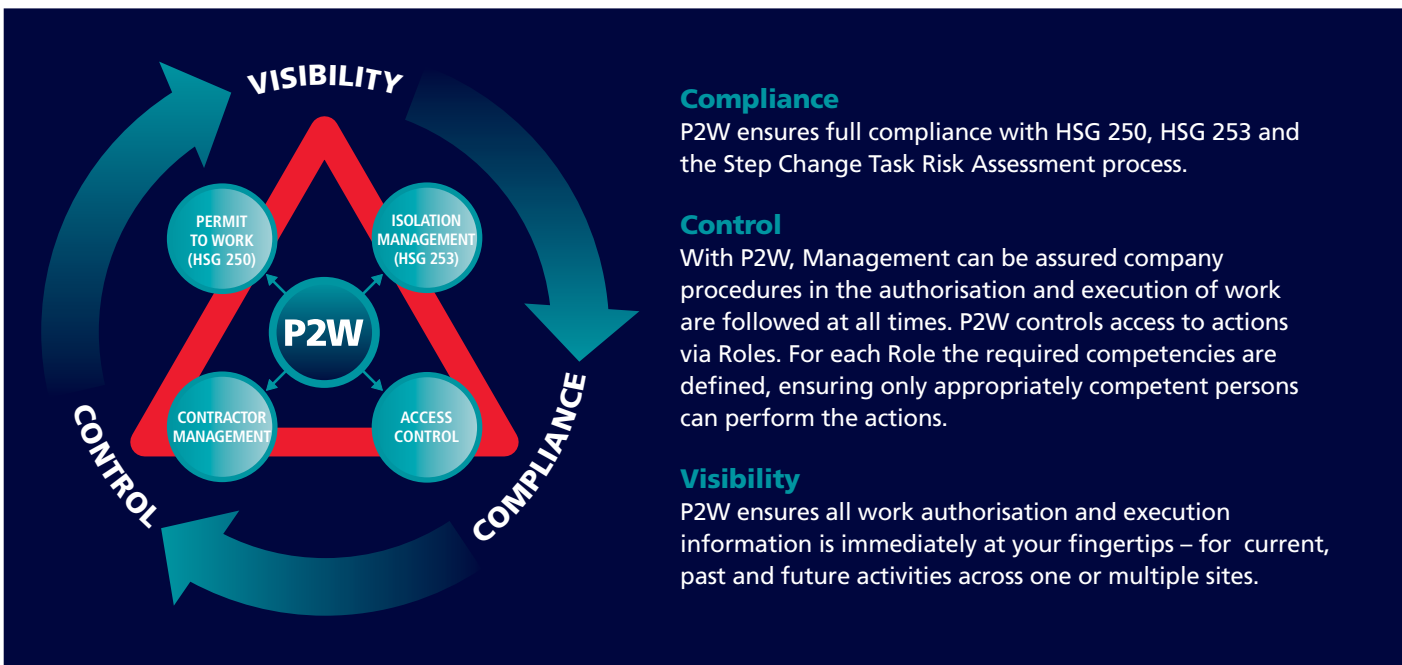
GLOBAL ACCESS

P2W is browser based so users can access the system from wherever they are, onshore or offshore.

CONTACT

Electronic Email: info@gemsoft7.com Web: www.gemsoft7.com Phone: +44 (0) 141 946 9254

Postal Block 6, Kelvin Campus, West of Scotland Science Park, GLASGOW, G20 0SP, United Kingdom



Compliance

P2W ensures full compliance with HSG 250, HSG 253 and the Step Change Task Risk Assessment process.

Control

With P2W, Management can be assured company procedures in the authorisation and execution of work are followed at all times. P2W controls access to actions via Roles. For each Role the required competencies are defined, ensuring only appropriately competent persons can perform the actions.

Visibility

P2W ensures all work authorisation and execution information is immediately at your fingertips – for current, past and future activities across one or multiple sites.

▶ P2W Permits

The P2W Authorisation Engine can be configured to implement your own specific PTW process:

- Flexible Authorisation** Define your own organisation specific authorisation process involving, for instance: Security, Competent Person, Authorised Person, Isolation Authority, Fire-master, etc
- Checklists** Define your own checklists for each sign off, to ensure necessary actions are taken and required data is captured (these use GEMsoft7's Flexi-Form technology).
- Roles** Participation within the authorisation process is role based, e.g. any member of staff designated as an Authorised Person (AP) can perform the AP sign-off if desired. This simplifies administration while maximising flexibility.
- Flexible Printing** The selection of what information appears in printed permits and the format used is completely configurable. This avoids the need for pre-printed stationery yet gives a consistent and flexible result.
- Process Management** Interactive process management screens that support planning and management of resources and work.

▶ P2W Risk Assessment

	Trivial	Moderate	Serious
Rare	Low	Low	Medium
Possible	Low	Medium	High
Likely	Medium	High	High

P2W supports multiple methods for capturing Risk Assessments. They can be:

- attached as external documents produced, for instance, by a Contractor
- developed online using GEMsoft7's unique Flexi-Form Technology
- developed online by selection of appropriate hazards and associated controls from the P2W Hazard Register and Risk Evaluation matrix.

▶ P2W Isolations

The P2W Isolation module provides the following:

- Permit Locking** Isolation Certificates implement control links with permits ensuring a permit cannot be issued until all isolations are in place, and prevents isolations being removed while the permit is in a live status. Full support for Sanction To Test.
- Shutdown Support** Support for Isolation libraries that can be retrieved according to equipment and/or shutdown process, greatly reducing the work required for planning shutdowns.
- LTI Support** P2W's Register mechanism supports the creation of registers to suit your own requirements, e.g. one for Long Term Isolations. The Register mechanism supports reviews, which means you can define the LTI register to prompt for reviews every X weeks or months.
- Flexible IP Tag Printing** Full support for printing of IP lists and tags, with the ability to reprint without automatic renumbering to preserve work already carried out.

CONTACT

Electronic Email: info@gemsoft7.com Web: www.gemsoft7.com Phone: +44 (0) 141 946 9254
Postal Block 6, Kelvin Campus, West of Scotland Science Park, GLASGOW, G20 0SP, United Kingdom